



[Praktikum 6]
Microsoft Visual Basic 6.0

Dosen : Cipi Rahmat Hidayat,S.Kom

STMIK Tasikmalaya , Zein Corporation Software Engineering



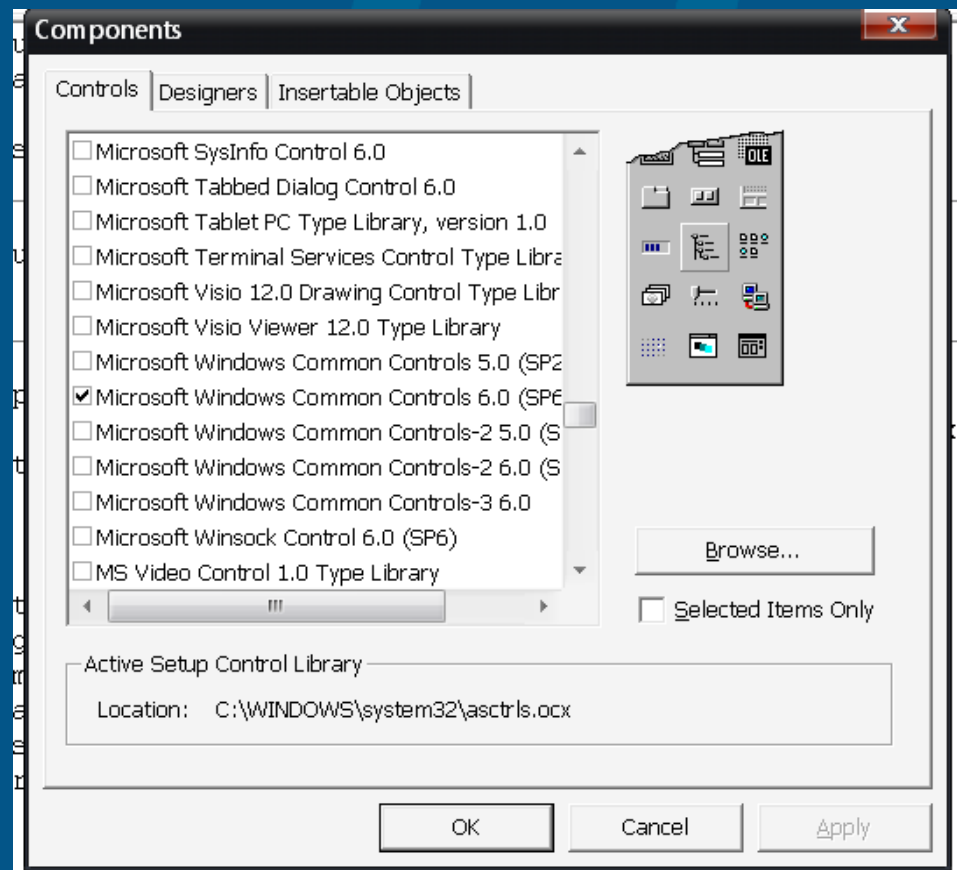
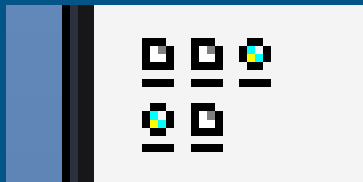
Praktikum, serius .. ?

Wah pokonya harus bisa nih..



Penggunaan ListView

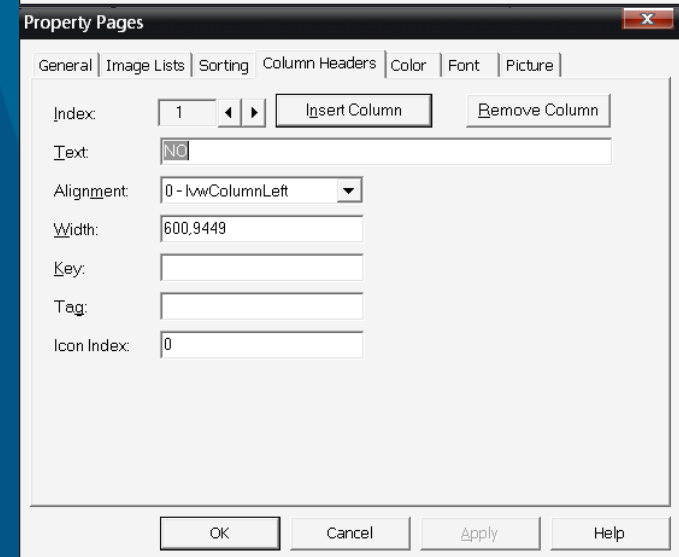
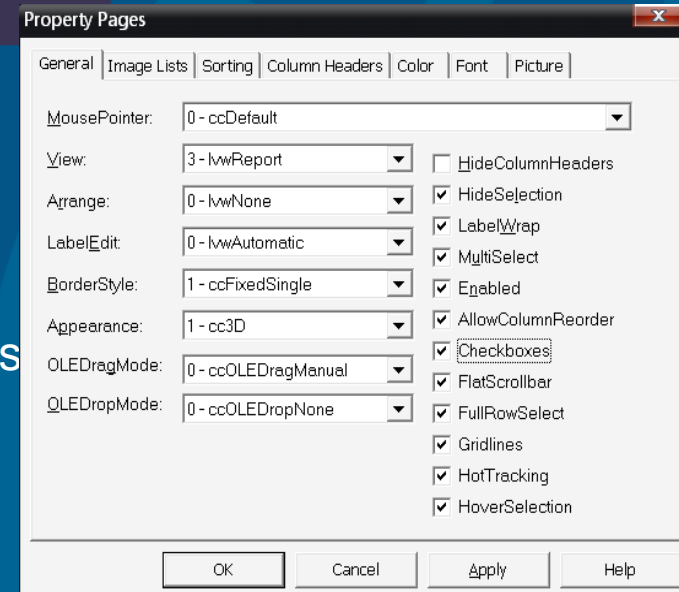
- Untuk menambahkan komponen ListView silahkan Klik kanan pada toolbox => kemudian klik => Components
- Kemudian centang => Microsoft Windows Common Control 6.0 (SP6)
- Kemudian Klik => OK



Penggunaan ListView

Menambahkan Colom di Listview

- ❖ Pilih Komponen ListView dari Toolbox , kemudian masukan kedalam form.
- ❖ Atur lebar dan tinggi listview
- ❖ Klik kanan pada listview selanjutnya klik => properties untuk mengatur properties
- ❖ Pada Tab General => Ubah “View” =“3-lvwReport”
- ❖ Kemudian centang semua pilihan yng ada di sebelah kanan kecuali “HideCloumnHeaders”
- ❖ Kemudian pilih Tab Column Header,
- ❖ Pilih Insert Column untuk menambahkan Kolom
- ❖ Pilih RemoveColumn untuk menambahkan Kolom
- ❖ Pilih Text untuk mengisi Nama Kolom
- ❖ Pilih Aligment untuk mengatur Perataan Teks
- ❖ Pilih Width untuk mengatur lebar kolom.



Contoh 6.1

- Buat Tampilan Form seperti dibawah ini :

The screenshot shows a Windows application window titled "Form Barang (Non Database)". The form has a light pink background and contains the following elements:

- Kode Barang:** A text input field with the ID `Text_Kodebarang`.
- Nama Barang:** A text input field with the ID `Text_Namabarang`.
- Satuan:** A dropdown menu with the ID `Combo_Satuan`.
- Diskon:** A text input field with the ID `Text_Diskon` followed by a percentage sign (%).
- Harga:** A text input field with the ID `Text_Harga` preceded by "Rp.".
- Buttons:** Three buttons are stacked vertically on the right side: `BERSIHKAN`, `SIMPAN`, and `KELUAR`.
- ListView:** A large empty list view control with the ID `ListView1`.
- Total:** A label `Total barang :` followed by a text box with the ID `Label_Totalbarang`.

Contoh 6.1 [Set Properti]

Nama Objek	Properties	Isi
Listview1	Column	Kode Barang, Nama Barang, Satuan, Diskon, Harga
Text_Kodebarang	Text	Text_Kodebarang
Text_Namabarang	Text	Text_Namabarang
Combo_Satuan	Text	Combo_Satuan
-	List	Buah,Bungkus,Butir,Kg,Sachet
Text_Diskon	Text	Text_Diskon
Text_Harga	Text	Text_Harga
Command_Bersihkan	Text	BERSIHKAN
Command_Simpan	Text	SIMPAN
Command_Keluar	Text	KELUAR
Label_Totalbarang	Caption	Label_Totalbarang

```
Private Sub kosong()  
Text_Kodebarang.Text = ""  
Text_Namabarang.Text = ""  
Combo_Satuan.Text = ""  
Text_Harga.Text = ""  
Text_Diskon.Text = ""  
Label_Totalbarang.Caption =  
ListView1.ListItems.Count  
End Sub
```

```
Private Sub  
Combo_Satuan_KeyPress(KeyAscii As  
Integer)  
If KeyAscii = 13 Then  
Text_Diskon.SetFocus  
End Sub
```

```
Private Sub  
Command_Bersihkan_Click()  
ListView1.ListItems.Clear  
kosong  
Text_Kodebarang.SetFocus  
End Sub
```

```
Private Sub Command_Keluar_Click()  
Unload Me  
End Sub
```

```
Private Sub Command_Simpan_Click()  
If Text_Kodebarang.Text = "" Or  
Text_Namabarang.Text = "" Or  
Combo_Satuan.Text = "" Or  
Text_Diskon.Text = "" Or Text_Harga.Text =  
"" Then
```

```
MsgBox "Silahkan Isi data dengan lengkap",  
vbCritical, "Gagal Simpan"  
Else  
Dim I As ListItem  
Set I = ListView1.ListItems.Add()  
I.Text = Text_Kodebarang.Text  
I.SubItems(1) = Text_Namabarang.Text  
I.SubItems(2) = Combo_Satuan.Text  
I.SubItems(3) = Text_Diskon.Text  
I.SubItems(4) = Text_Harga.Text
```

```
kosong  
MsgBox "Data berhasil tersimpan. !",  
vbInformation, "Tersimpan"  
Text_Kodebarang.SetFocus  
End If  
End Sub
```

```
Private Sub Form_Activate()  
Text_Kodebarang.SetFocus  
End Sub
```

```
Private Sub Form_Load()  
kosong  
End Sub
```

```
Private Sub  
Text_Diskon_KeyPress(KeyAscii As  
Integer)  
If KeyAscii = 13 Then Text_Harga.SetFocus  
End Sub
```

```
Private Sub
```

```
Text_Harga_KeyPress(KeyAscii As  
Integer)  
If KeyAscii = 13 Then  
Command_Simpan_Click  
'Agar hanya angka saja yg bisa diinputkan  
If Not (KeyAscii >= Asc("0") And KeyAscii  
<= Asc("9") Or KeyAscii = vbKeyBack) Then  
KeyAscii = 0  
End If
```

```
End Sub
```

```
Private Sub  
Text_Kodebarang_KeyPress(KeyAscii As  
Integer)  
If KeyAscii = 13 Then  
Text_Namabarang.SetFocus  
End Sub
```

```
Private Sub  
Text_Namabarang_KeyPress(KeyAscii  
As Integer)  
If KeyAscii = 13 Then  
Combo_Satuan.SetFocus  
End Sub
```

Contoh 6.1 [Hasil Akhir]

Form Barang (Non Database)

Kode Barang:

Nama Barang:

Satuan:

Diskon: %

Harga: Rp.

BERSIHKAN

SIMPAN

KELUAR

Kode Barang	Nama Barang	Satuan	Diskon	Harga Barang
<input type="checkbox"/> KB001	Pepsodent	Buah	0	15000
<input type="checkbox"/> KB002	Sunsilk	Sachet	0	500
<input type="checkbox"/> KB003	Sabun Lux	Buah	0	2500

Total barang :

Contoh 6.2

Buat Tampilan Form seperti dibawah ini :

Form Transaksi Penjualan (Non Database)

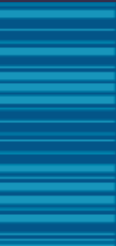
No. Bukti :	<input type="text" value="Txt_Nobukti"/>	Label_Info	<input type="text" value="Label_Nominal"/>		
Tanggal :	<input type="text" value="Label_Tanggal"/>				
<input type="text" value="Combo_Kodebarang"/>	<input type="text" value="Label_Namabarang"/>	<input type="text" value="Label_Satu"/>	<input type="text" value="Label_Harga"/>	<input type="text" value="Label_Diskon"/>	<input type="text" value="Text_Qty"/>
<input type="checkbox"/> ListView1					
<input type="button" value="BARU"/>		Total Item :	<input type="text" value="Label_T"/>	Total bayar :	<input type="text" value="Label_Totalbayar"/>
<input type="button" value="KELUAR"/>				Bayar :	<input type="text" value="Text_Bayar"/>
				Kembali :	<input type="text" value="Label_Kembali"/>

Contoh 6.2 [Set Properti]

Nama Objek	Properties	Isi
Listview1	Column	No,Kode Barang, Nama Barang, Satuan, Diskon, Harga, Total
Text_Nobukti	Text	Text_Nobukti
Label_Tanggal	Caption	Label_tanggal
Label_Info	Caption	Label_Info
Label_Nominal	Caption	Label_Nominal
-	BorderStyle	1 – Fixed Single
Combo_Kodebarang	Text	Combo_Kodebarang
-	List	KB001,KB002,KB004,KB005,KB006,KB007,KB008,KB009,KB010
Text_Harga	Caption	Text_Harga
Label_Namabarang	Caption	Label_Namabarang
-	BorderStyle	1 – Fixed Single
Label_Satuan	Caption	Label_Satuan
-	BorderStyle	1 – Fixed Single
Label_Harga	Caption	Label_Harga
-	BorderStyle	1 – Fixed Single
Label_Diskon	Caption	Label_Diskon
-	BorderStyle	1 – Fixed Single
Text_Qty	Text	Text_Qty

-	BackColor	&H0080FF80&
Label_Totalitem	Caption	Label_Totalitem
-	BorderStyle	1 – Fixed Single
Label_Totalbayar	Caption	Label_Totalbayar
-	BorderStyle	1 – Fixed Single
Text_Bayar	Text	Text_Bayar
-	BackColor	&H0080FF80&
Label_Kembali	Caption	Label_Kembali
-	BorderStyle	1 – Fixed Single
Command_Baru	Caption	Baru
Command_Keluar	Caption	Keluar

245304354



Dim totalbayar As Double
Dim n, i, totalitem As Integer

Private Sub kosong()

Combo_Kodebarang.Text = ""
Label_Tanggal = Now
Label_Namabarang.Caption = ""
Label_Satuan.Caption = ""
Label_Harga.Caption = ""
Label_Diskon.Caption = ""
Label_Nominal = "0"
Label_Info = ""
Label_Totalitem = ""
Label_Totalbayar = "0"
totalbayar = 0
totalitem = 0
Label_Kembali = "0"
Text_Qty.Text = ""
Text_Bayar = ""
End Sub

Private Sub combo_kodebarang_Change()

combo_kodebarang_Click
End Sub

Private Sub combo_kodebarang_Click()

Select Case (Combo_Kodebarang.Text)
Case "KB001"
Label_Namabarang.Caption = "Pepsodent"
Label_Satuan.Caption = "buah"
Label_Harga.Caption = "1500"
Label_Diskon.Caption = "0"

Case "KB002"

Label_Namabarang.Caption = "Sabun Lux"
Label_Satuan.Caption = "buah"
Label_Harga.Caption = "2000"
Label_Diskon.Caption = "0"

Case "KB003"

Label_Namabarang.Caption = "Mie Sedap Goreng"
Label_Satuan.Caption = "bungkus"
Label_Harga.Caption = "1700"
Label_Diskon.Caption = "0"

Case "KB004"

Label_Namabarang.Caption = "Kopi Kapal Api"
Label_Satuan.Caption = "bungkus"
Label_Harga.Caption = "1000"
Label_Diskon.Caption = "0"

Case "KB005"

Label_Namabarang.Caption = "Tisu Paseo"
Label_Satuan.Caption = "bungkus"
Label_Harga.Caption = "2500"
Label_Diskon.Caption = "0"

Case "KB006"

Label_Namabarang.Caption = "Shampo Sunsilk"
Label_Satuan.Caption = "Sachet"
Label_Harga.Caption = "500"
Label_Diskon.Caption = "0"

Case "KB007"

Label_Namabarang.Caption = "Minyak Wangi"
Label_Satuan.Caption = "buah"
Label_Harga.Caption = "10000"
Label_Diskon.Caption = "0"

Case "KB008"

Label_Namabarang.Caption = "Mie Indomie Goreng"
Label_Satuan.Caption = "buah"
Label_Harga.Caption = "1500"
Label_Diskon.Caption = "0"

Case "KB009"

Label_Namabarang.Caption = "Adem Sari"
Label_Satuan.Caption = "Sachet"
Label_Harga.Caption = "1000"
Label_Diskon.Caption = "0"

Case "KB010"

Label_Namabarang.Caption = "Tolak Angin"
Label_Satuan.Caption = "Sachet"
Label_Harga.Caption = "1500"
Label_Diskon.Caption = "2"

End Select

Label_Info.Caption = "Harga :"
Label_Nominal.Caption = "Rp. " &
Label_Harga.Caption

End Sub

```

Private Sub Hitungtotal()
totalbayar = 0
totalitem = 0
For i = 1 To ListView1.ListItems.Count
Set I = ListView1.ListItems.Item(i)
totalbayar = totalbayar + Val(I.SubItems(7))
totalitem = totalitem + Val(I.SubItems(6))
Next
Label_Totalbayar.Caption = "Rp." &
Format(totalbayar, "###,###,###")
Label_Totalitem.Caption = totalitem
Label_Info.Caption = "Total Bayar :"
Label_Nominal.Caption = "Rp." &
Format(totalbayar, "###,###,###")

```

```

End Sub
Private Sub
Combo_Kodebarang_KeyDown(KeyCode As
Integer, Shift As Integer)
If KeyCode = vbKeySpace Then
Text_Bayar.SetFocus
End Sub

```

```

Private Sub
combo_kodebarang_KeyPress(KeyAscii As
Integer)
If KeyAscii = 13 Then Text_Qty.SetFocus
End Sub

```

```

Private Sub Simpan()
Dim I As ListItem
n = n + 1
Set I = ListView1.ListItems.Add()
I.Text = n
I.SubItems(1) = Combo_Kodebarang.Text
I.SubItems(2) = Label_Namabarang.Caption
I.SubItems(3) = Label_Satuan.Caption
I.SubItems(4) = Label_Harga.Caption
I.SubItems(5) = Label_Diskon.Caption

```

```

I.SubItems(6) = Text_Qty.Text
I.SubItems(7) = Val(Text_Qty.Text) *
(Val(Label_Harga.Caption) -
(Val(Label_Harga.Caption) *
Val(Label_Diskon.Caption) / 100))
kosong
Hitungtotal
Combo_Kodebarang.SetFocus
End Sub

```

```

Private Sub Command_Baru_Click()
ListView1.ListItems.Clear
End Sub

```

```

Private Sub Command_Keluar_Click()
Unload Me
End Sub

```

```

Private Sub Form_Load()
kosong
Text_Nobukti = "NT-A001"
Hitungtotal
End Sub

```

```

Private Sub Text_Bayar_Change()
Label_Info.Caption = "Bayar :"
Label_Nominal.Caption = "Rp." &
Format(Text_Bayar.Text, "###,###,###")
Label_Kembali.Caption = "Rp." &
Format(Val(Text_Bayar) - totalbayar,
"###,###,###")
End Sub

```

```

Private Sub Text_Bayar_KeyPress(KeyAscii
As Integer)
If KeyAscii = 13 Then
MsgBox "Data berhasil tersimpan",
vbInformation, "Informasi"
Command_Baru_Click

```

```

Kosong
Combo_Kodebarang.SetFocus
End If

```

```

' Agar hanya angka saja yg bisa diinputkan
If Not (KeyAscii >= Asc("0") And KeyAscii <=
Asc("9") Or KeyAscii = vbKeyBack) Then
KeyAscii = 0
End If
End Sub

```

```

Private Sub Text_Qty_Change()
Label_Info.Caption = "Total :"
Label_Nominal.Caption = "Rp." &
Format(Val(Text_Qty.Text) *
(Val(Label_Harga.Caption) -
(Val(Label_Harga.Caption) *
Val(Label_Diskon.Caption) / 100)),
"###,###,###")
End Sub

```

```

Private Sub Text_Qty_KeyPress(KeyAscii As
Integer)
If KeyAscii = 13 Then
If Text_Qty = "0" Or Text_Qty = "" Then
MsgBox "Jumlah tidak boleh kosong",
vbCritical, "Informasi"
Else
Simpan
End If
End If

```

```

if Not (KeyAscii >= Asc("0") And KeyAscii <=
Asc("9") Or KeyAscii = vbKeyBack) Then
KeyAscii = 0
End If

```

```

End Sub

```

Contoh 6.2 [Hasil Akhir]

Form Transaksi Penjualan (Non Database)

No. Bukti :

Tanggal :

Bayar :

NO	Kode Barang	Nama Barang	Satuan	Harga	Diskon	Jumlah Beli	Total
<input type="checkbox"/> 1	KB001	Pepsodent	buah	1500	0	12	18000
<input type="checkbox"/> 2	KB002	Sabun Lux	buah	2000	0	2	4000
<input type="checkbox"/> 3	KB003	Mie Sedap Goreng	bungkus	1700	0	12	20400
<input type="checkbox"/> 4	KB004	Kopi Kapal Api	bungkus	1000	0	4	4000
<input type="checkbox"/> 5	KB005	Tisu Paseo	bungkus	2500	0	7	17500

Total Item : Total bayar :
Bayar :
Kembali :

32444245304354

3
2
4
4
4
4
2
4
5
3
0
4
3
5
4



Tugas 6.1

Tugas 6.1

1. Silahkan jelaskan fungsi dari script prosedur-prosedur yang ada pada Contoh 6.2
2. Dibuat dalam bentuk dokumen MS.Word
3. Dikirim ke alamat Email : cepi@stmik-tasikmalaya.ac.id

32444245304354